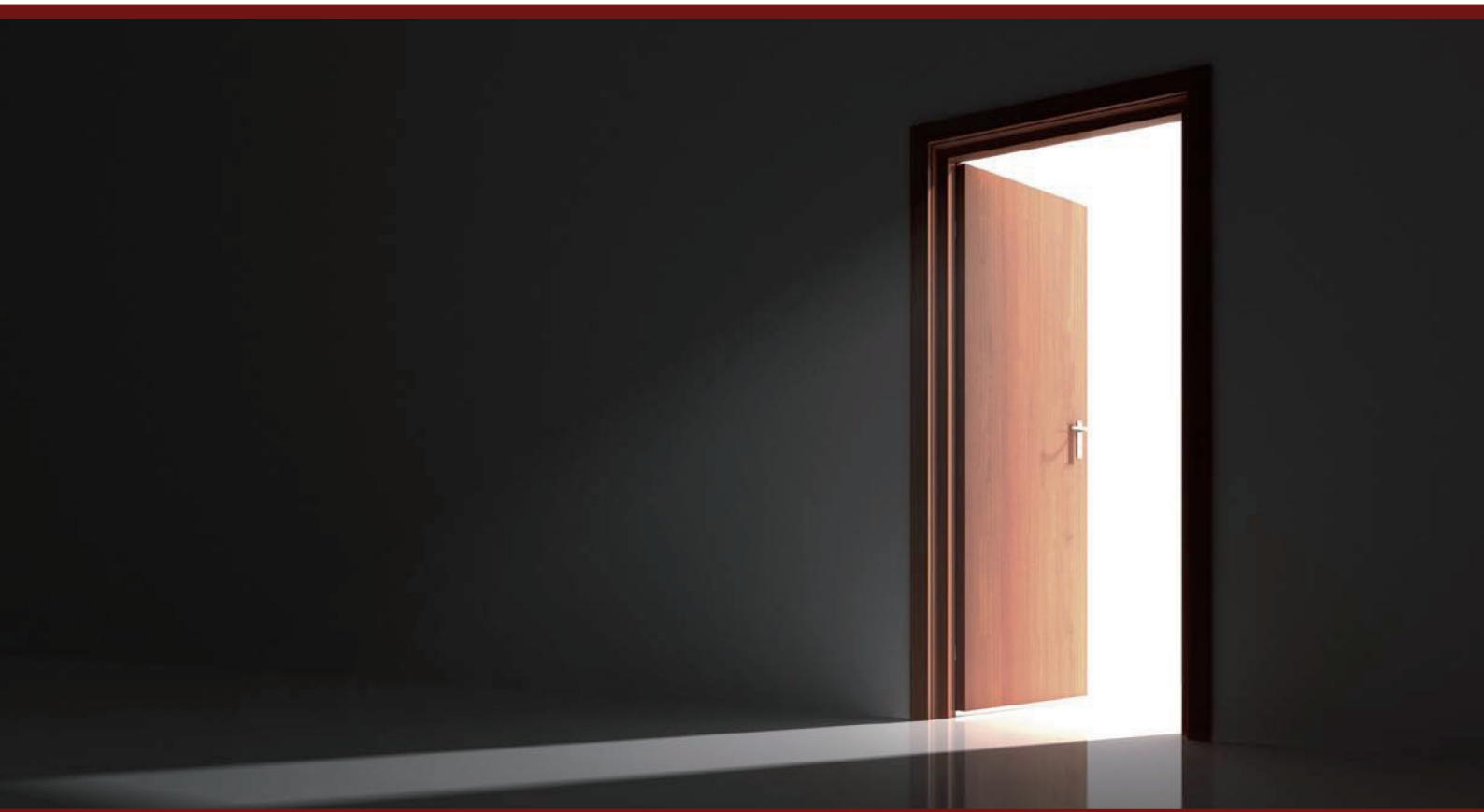


FUNCTIONALITY AND AESTHETICS

Maximum safety with individual design

THE NATURE OF DOORS



FIRE RESISTING ■ SMOKE CONTROL ■ SOUND PROOFING
BURGLARY PROTECTION ■ CLIMATE STABILITY

We present for your attention new quality of interior door.

Our goal is to combine modern requirements to the indoor air quality with the door functionality, its sound-insulation, smoke-proof and fire-proof properties, as well as demands for its appearance executed in accordance with requested shape and feel. Using new materials with the best environmental performance to make functional products, we are always one step ahead.

In the future healthy indoor air will be the decisive factor for the choice and quality of building materials to be used. The norms of energy saving result in reduced natural aeration inside the building. This is why special attention should be given to indoor emissions of hazardous substances. Making you feel good in residential and working environment is our key priority.

Functional interior door is a result of interaction of different materials. Thorough selection of materials with the consideration of their longevity, applied binding agents and ways of surface finishing are at the bottom of creation of the door which meets today's requirements for sound insulation (RwP 44 dB), as well as fire and smoke protection. At the same time it is key to maintain traditional appearance of interior door at a construction site.

Inner layer:

The inner layer is made of a wooden fiberboard, executed with ecologically clean binding agents of grain raw materials and rock dust. This is a piece executed of natural components, which at the same time boasts special technical properties of sound and heat insulation.

Framing:

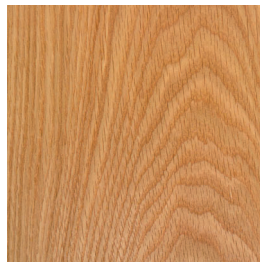
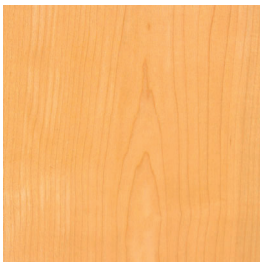
For framing only the solid wood is used taken from forestlands certified in accordance with the Programme for the Endorsement of Forest Certification (PEFC).



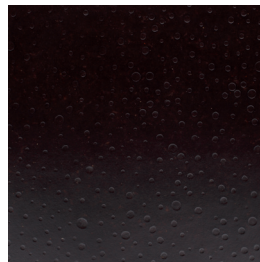
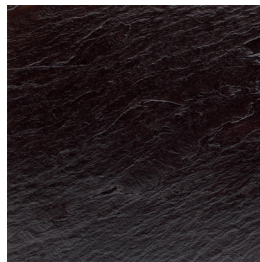
*Through our actions we can lay the ground
for the future of the coming generations on our planet.*

Surface:

Veneer sheet of solid wood 4 mm thick. The surface material can be chosen out of several species of wood and with the consideration of visual characteristics. The surface is coated with shellac made of secretions of lac bugs, with added alcohol.



Bio-composite sheet of recycled craft paper is executed with the use of bio-resins made of plant waste from sugar production. Such sheet checked for hazardous substances and with a biological base, is a sample of sustainability. Due to the use of processed and natural materials the client gets a choice between different surface structures of natural brown hues.





Bertsch Funktionstüren GmbH

OT Bimbach 13

97357 Prichsenstadt

Telefon +49(0)9382 31799-0

Telefax +49(0)9382 31799-21

www.bertsch-tueren.de

info@bertsch-tueren.de